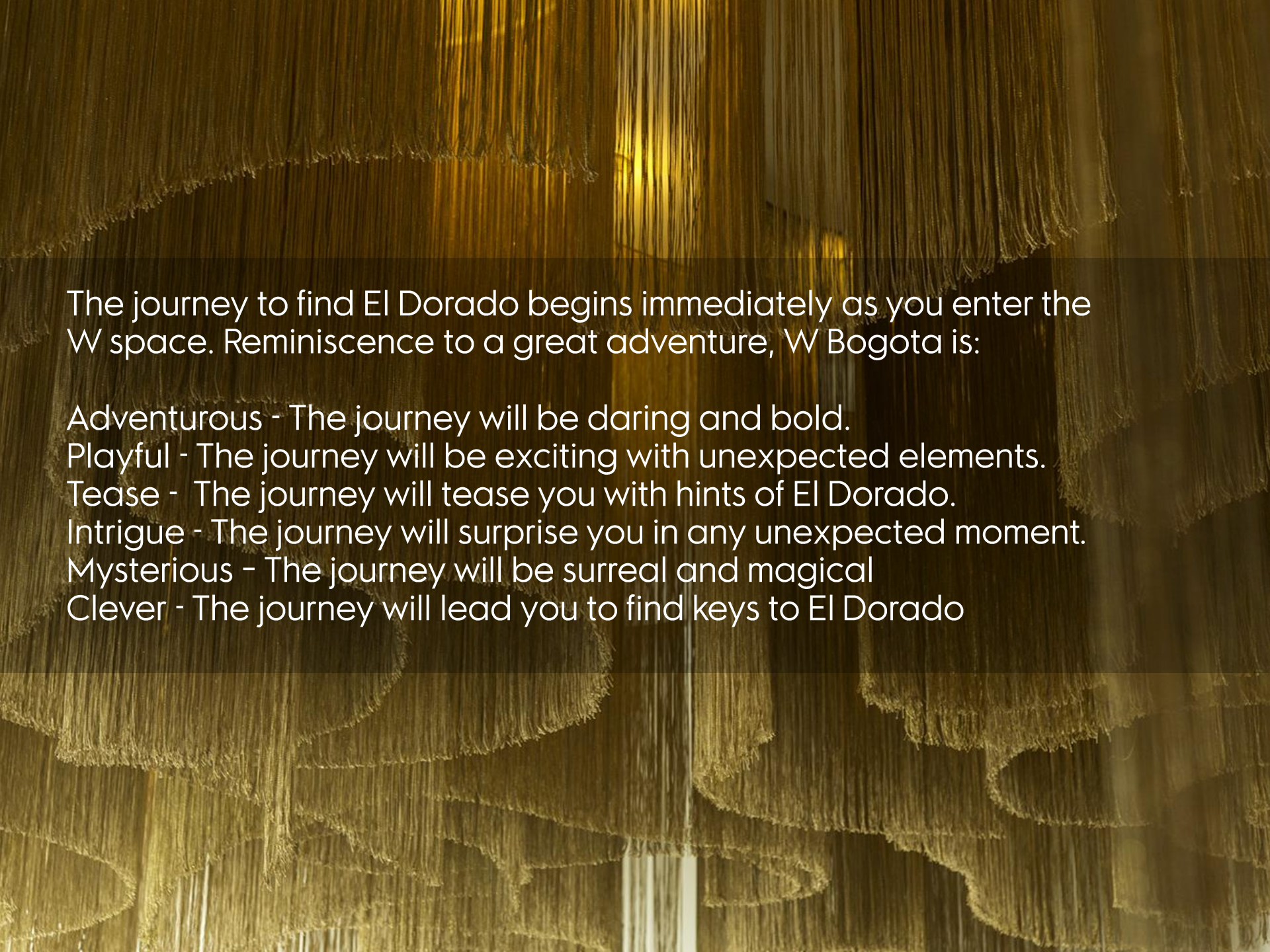


W BOGOTA



JOURNEY TO EL DORADO





The journey to find El Dorado begins immediately as you enter the W space. Reminiscence to a great adventure, W Bogota is:

Adventurous - The journey will be daring and bold.

Playful - The journey will be exciting with unexpected elements.

Tease - The journey will tease you with hints of El Dorado.

Intrigue - The journey will surprise you in any unexpected moment.

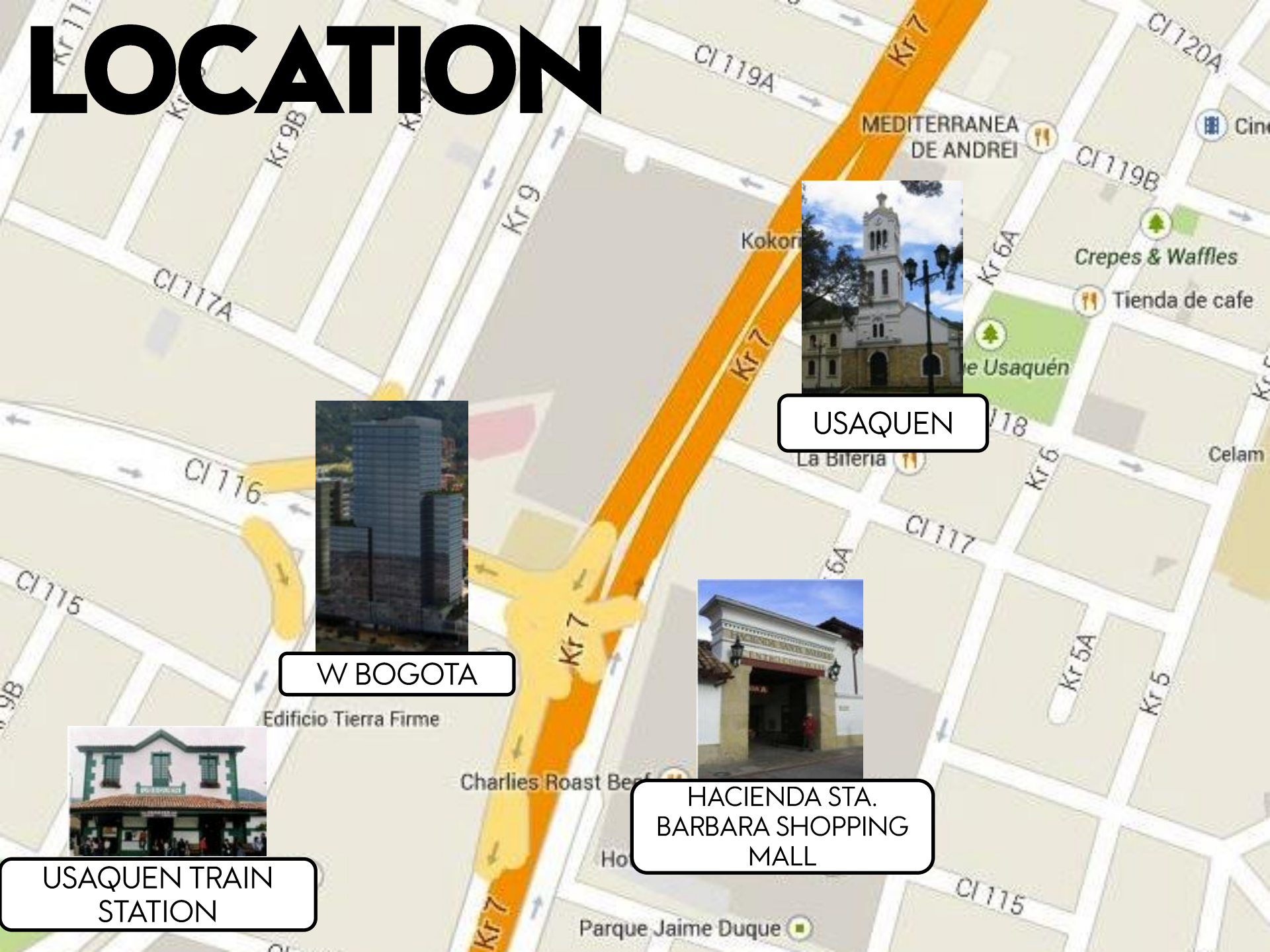
Mysterious - The journey will be surreal and magical

Clever - The journey will lead you to find keys to El Dorado

LOCATION



LOCATION



USAQUEN



W BOGOTA



HACIENDA STA. BARBARA SHOPPING MALL

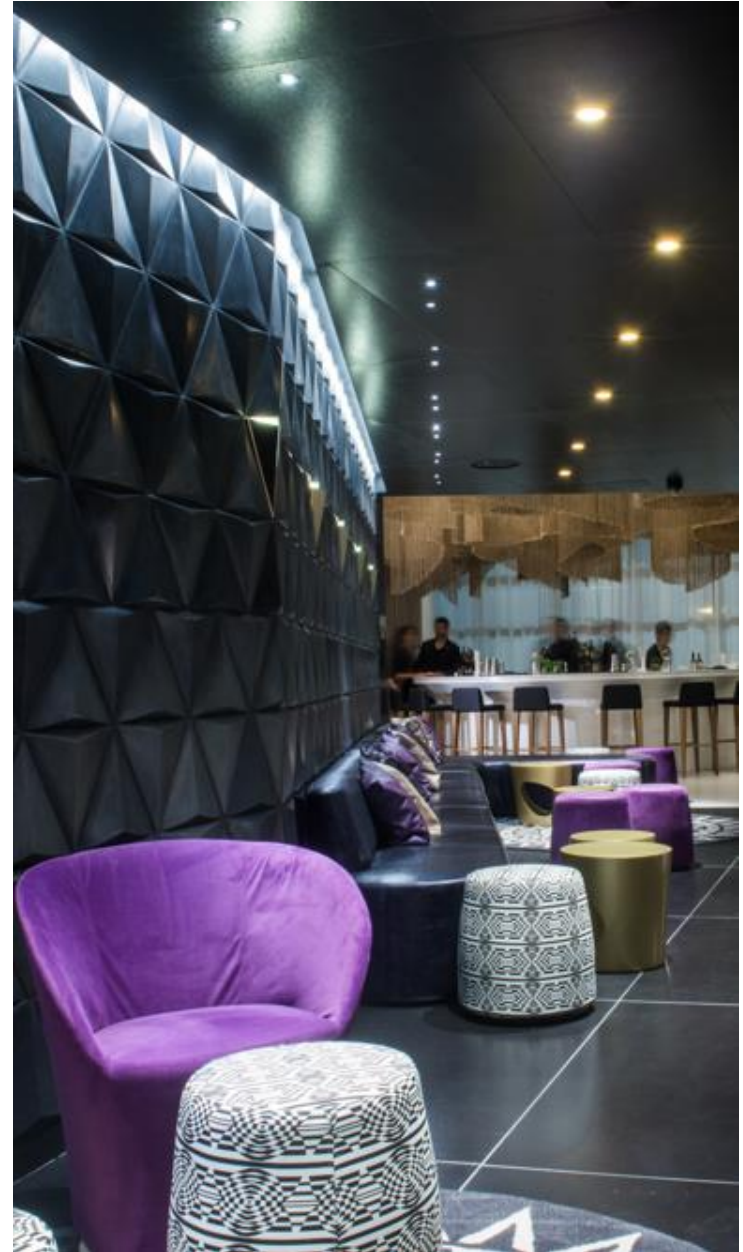


USAQUEN TRAIN STATION



EXCLUSIVE RESIDENTIAL AREA, IN THE VICINITY OF FASHIONABLE USAQUEN DISTRICT

- Easily accessible from both the 7th and 9th Avenues
- 45 minutes away from El Dorado International Airport
- Short taxi ride away to Bogota's financial district
- Close distance to entertainment districts such as Zona T, Zona G, Parque 93 and Parque El Virrey
- Surrounded by multinational companies
- Walking distance to the picturesque Usaquén district, featuring international and local restaurants, and internationally renowned Sunday Flea Market



GUESTROOMS



STYLISH ROOMS

BE ONE OF THE FIRST TO WAKE-UP IN THE COMFORT OF A W SIGNATURE BED FEATURED IN ALL OUR 168 GUESTROOMS

- Experience Whatever/Whenever™ service
- Bliss® Spa sink-side bath amenities
- 40" flat screen LED TV with Sonifi technology and iPod docking station on bespoke work desk
- Lounge area with reading light adjacent to the floor-to-ceiling windows
- Get ready to transform the ceremony of El Dorado in one of our 33 spacious suites
- 1 EWOW Suite of 139 m²
- 1 WOW Suite of 97 m²
- 9 Fantastic Suites of 69 m²
- 10 Marvelous Suites of 53 m²
- 7 Cool Corner Suites of 46 m²
- 5 Studio Suites of 46 m²

WONDERFUL ROOM



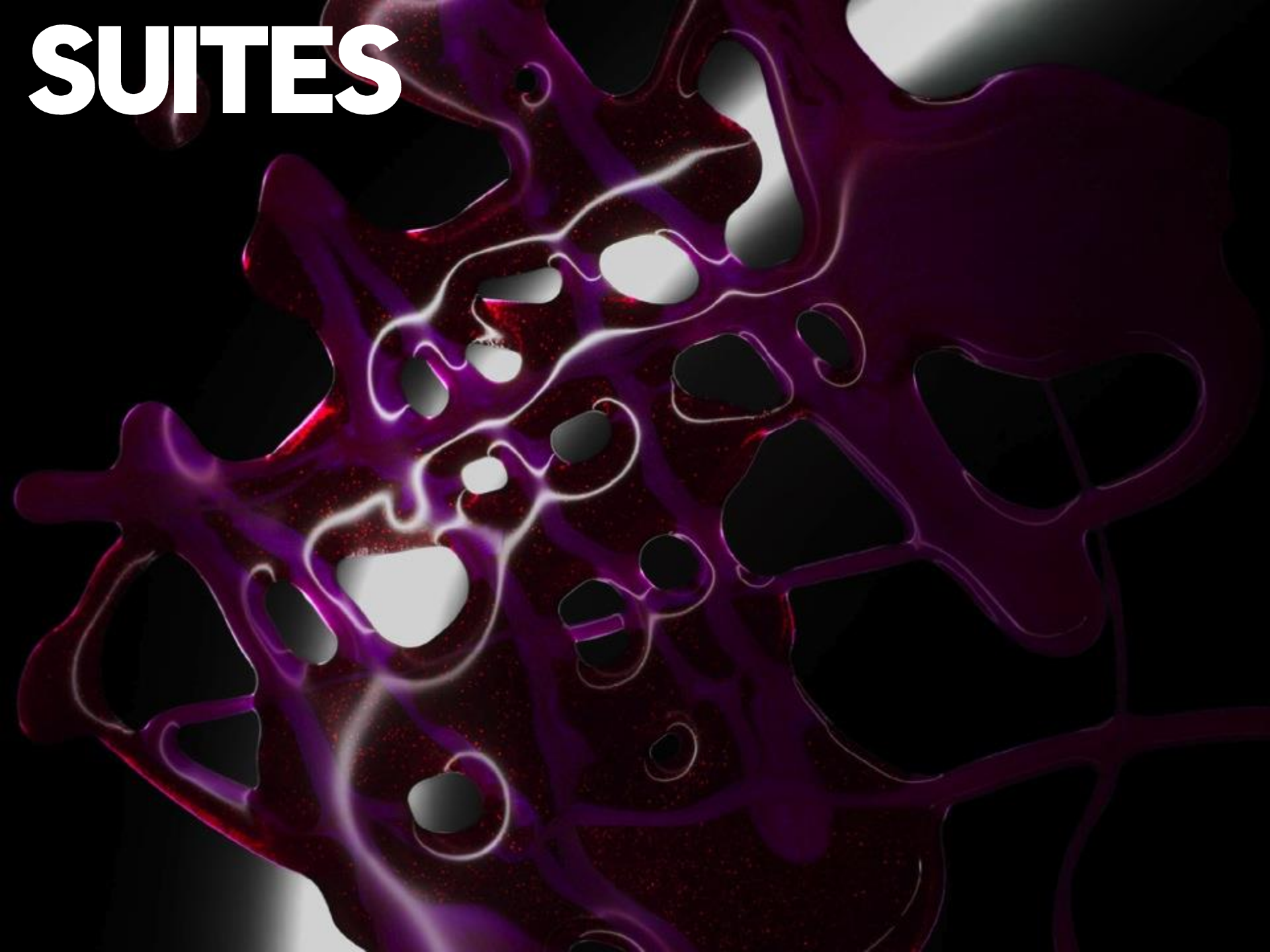
SPECTACULAR ROOM



FABULOUS ROOM



SUITES



STUDIO SUITE & COOL CORNER

46M² OF STYLE

- West facing, city skyline views of Bogota's sunset
- Oversized suite with king bed
- Floors to ceiling windows
- 46" flat screen LED TV with Sonify technology
- Complimentary high-speed Internet access
- Bliss Spa sink-side bathroom amenities
- Rain shower

MARVELOUS SUITE

53M² OF STYLE

- East facing, view of Bogota's Los Cerros sunrise
- Spacious suite with intimate living room area aside guestroom
- Floors to ceiling windows
- 46" flat screen LED TV with Sonify technology
- Complimentary high-speed Internet access
- Bliss Spa sink-side bathroom amenities
- Rain shower & bathtub





FANTASTIC SUITE

69M² OF STYLE

- West facing, fantastic city skyline views of Bogota ´ sunset
- Spacious living room separate from bedroom
- Floors to ceiling windows
- 46 ´ flat screen LED TV with Sonify technology
- Complimentary high-speed Internet access
- Bliss Spa sink-side bathroom amenities
- Rain shower and bathtub

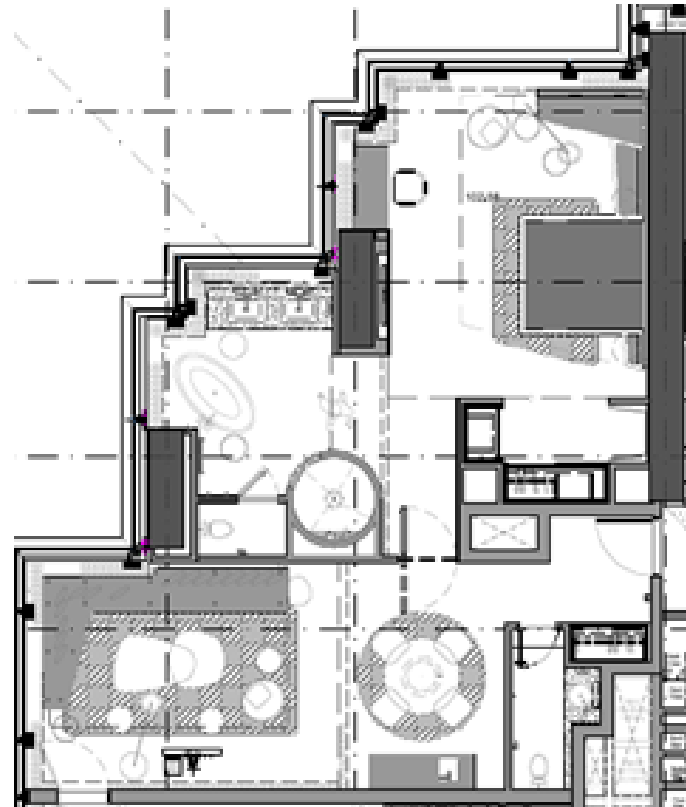




WOW SUITE

97 M² OF STYLE

- Fantastic views of Bogota
´ sunrise
- Colors and tones inspired in
Guatavita ´s lake
- Spacious independent living
room
- Beautiful Circular Spa Shower
and separate bathtub
- Floor to ceiling windows
- 55 ´ flat screen LED TV with
Sonify technology
- Complimentary high-speed
Internet access





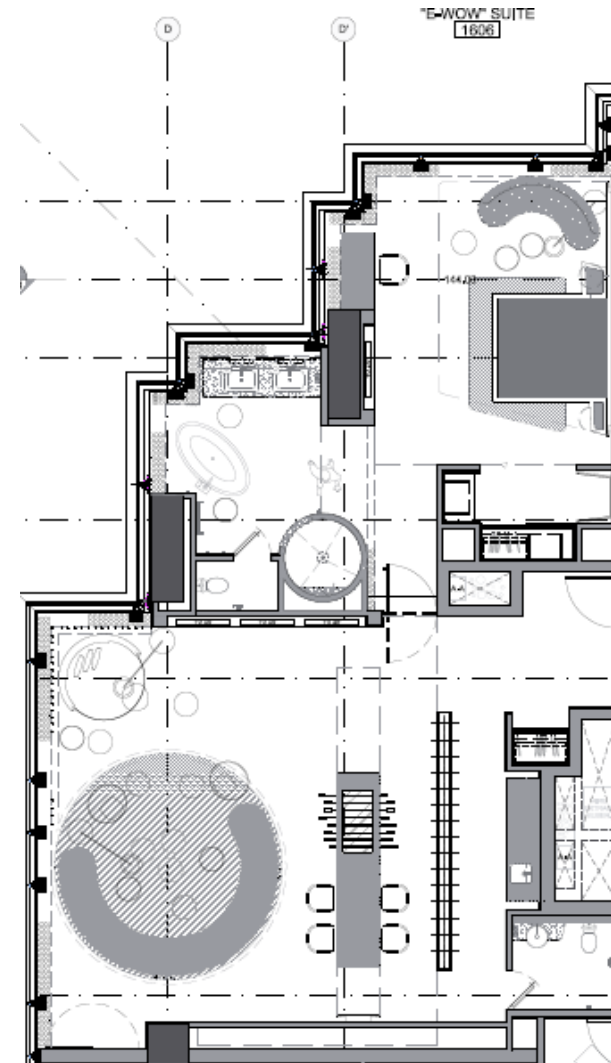




EWOW SUITE

139 M² OF STYLE

- Incredible 180° views of Bogota
- Spacious living room with dining table and "fussball" table
- Ideal space for Hospitality Suite and Exclusive Parties
- Surround System Bose
- Video Wall
- Beautiful Spa Shower and separate bathtub
- Floor to ceiling windows
- Complimentary high-speed Internet access











VENUES

STUDIOS - STATE-OF-THE-ART MEETING SPACE

MARKET KITCHEN - SIGNATURE RESTAURANT

W LOUNGE - ALL DAY LIVING SPACE

AU ROOM - LATE NIGHT DESTINATION BAR

AWAY SPA - RECOUP REFUEL REVAMP

FIT - POLISH BODY AND MINDSET

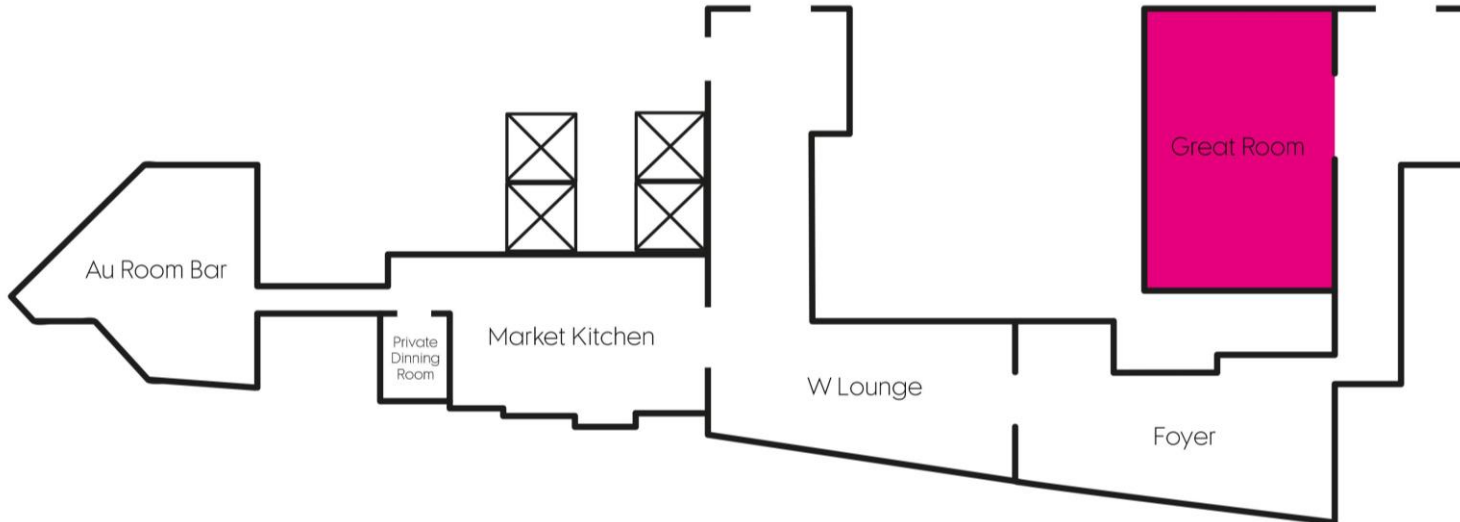
STUDIOS - STATE-OF-THE-ART MEETING SPACE

**W BOGOTA OFFERS OVER 700 M2 / 7,900 SQ. FT. OF
SPACE WITH STATE-OF-THE-ART TECHNOLOGY FOR YOU
TO PLAN YOUR MEMORABLE EVENT AND BUSINESS
MEETINGS.**



GREAT ROOM

- 218 m² / 2.347 sq. ft.
- Independent direct access from plaza level on Carrera 7
- Direct access from hotel and to W Lounge & Market Kitchen
- Spacious foyer with natural daylight
- Built-in speaker system and screens
- Independent tech control room, ideal for simultaneous interpretation
- In house audiovisual company and support
- Ceiling height 5 mts / 3.4 ft.
- Accommodates approx. 245 in theatre, 120 in classroom, and 160 banquet

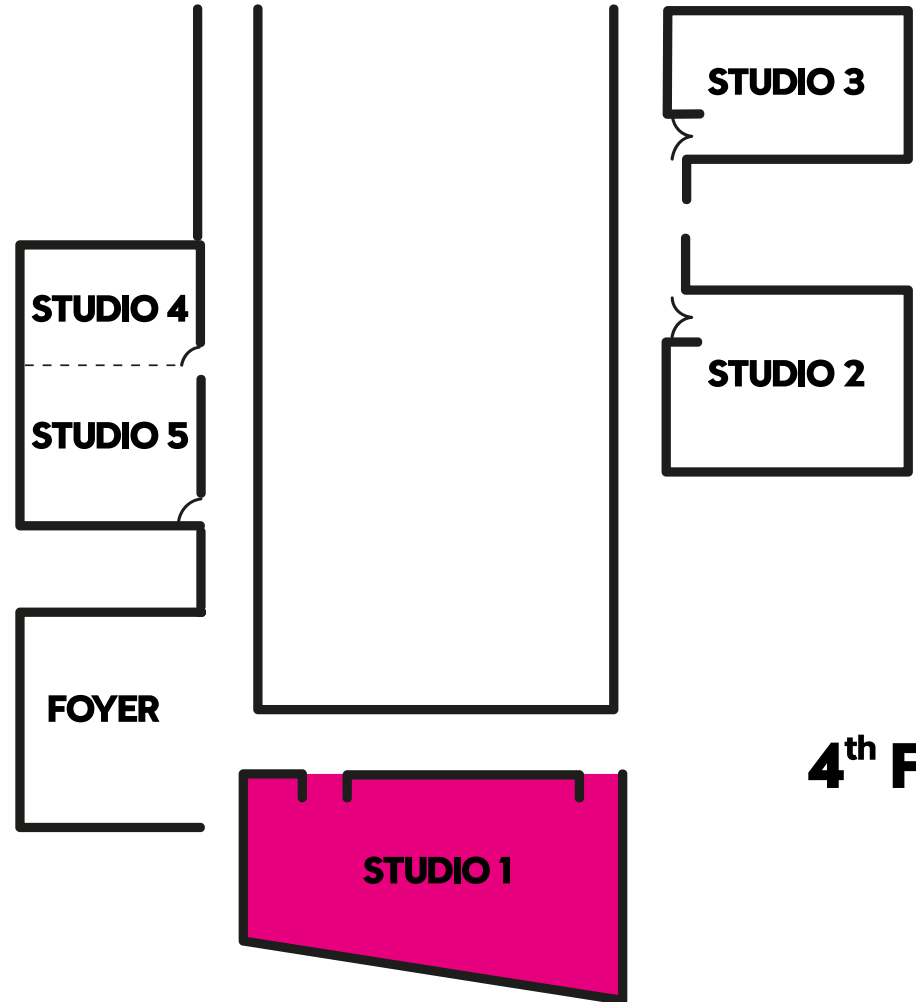


GREAT ROOM



STUDIO 1

- 71 m² / 764 sq. ft.
- Located one floor above Great Room
- Spacious room with natural daylight
- Built-in speaker system and screen
- Ceiling height 3,5 m / 11 ft.
- Accommodates approx. 80 in theatre, 36 in classroom and 50 in banquet.

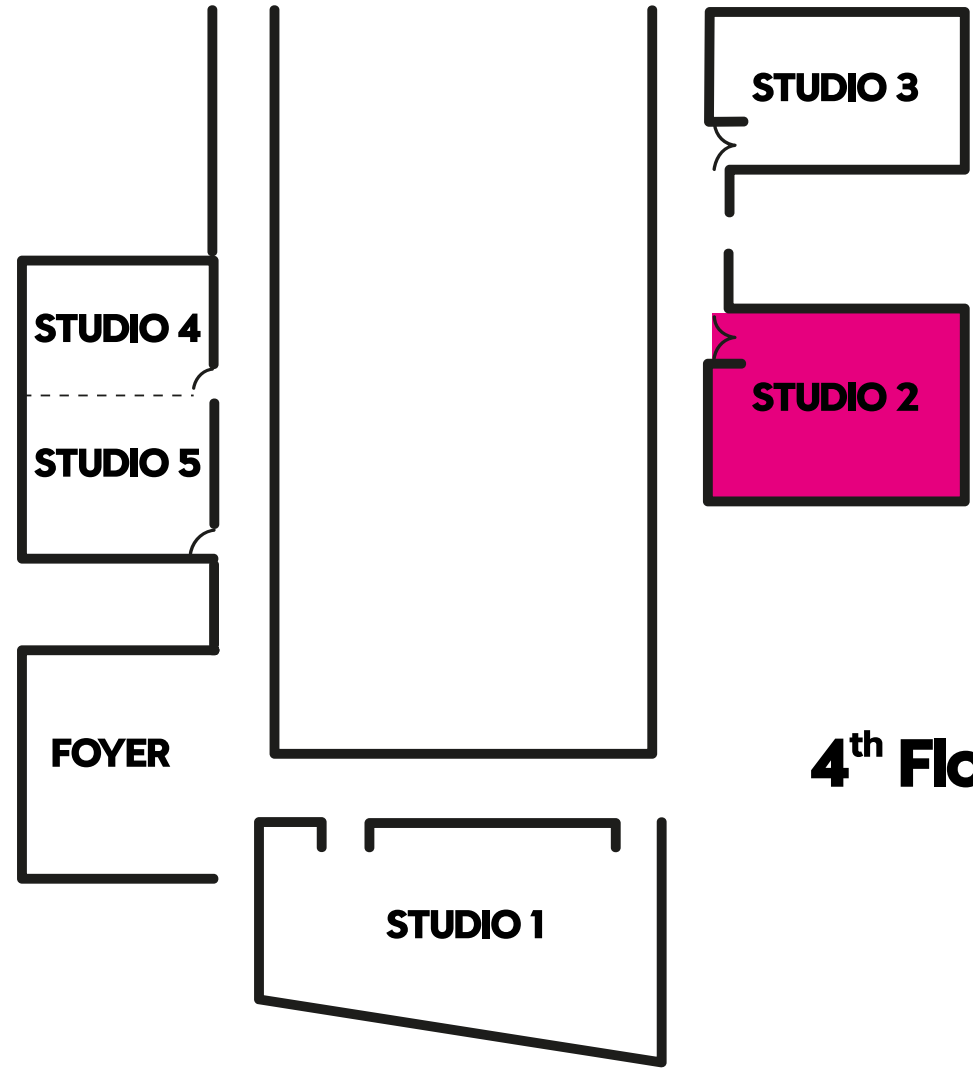


4th Floor



STUDIO 2

- 43 m² / 463 sq. ft.
- Located one floor above from Great Room
- Intimate room with natural daylight
- Built-in speaker system and flat screen LCD TV
- Ceiling height 2,4 mts / 7 ft.
- Accommodates approx. 45 in theatre, 24 in classroom and 30 in banquet.



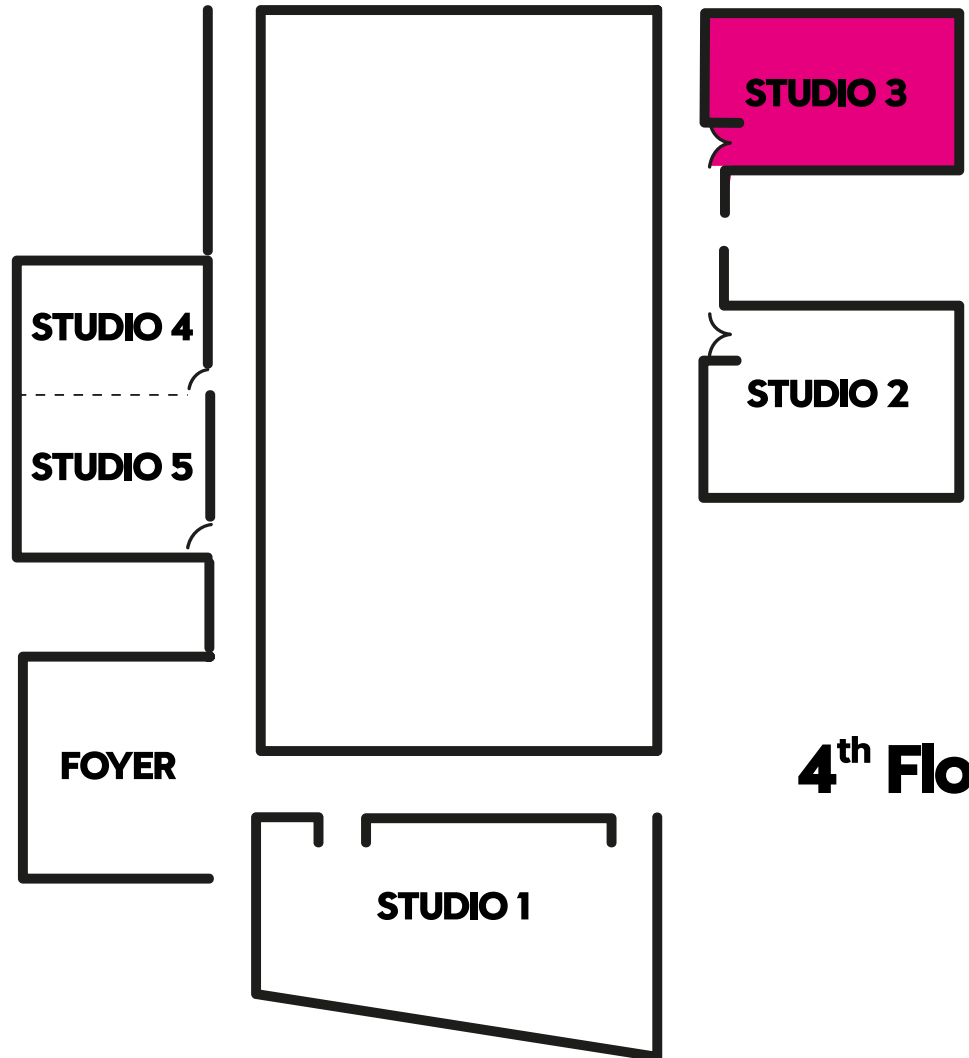
4th Floor

STUDIO 2



STUDIO 3

- 35 m² / 377 sq. ft.
- Located on fourth floor
- Intimate room with natural daylight
- Built-in speaker system and flat screen LCD TV
- Ceiling height 2,4 mts / 7 ft.
- Accommodates approx. 38 in theatre, 21 in classroom and 20 in banquet.

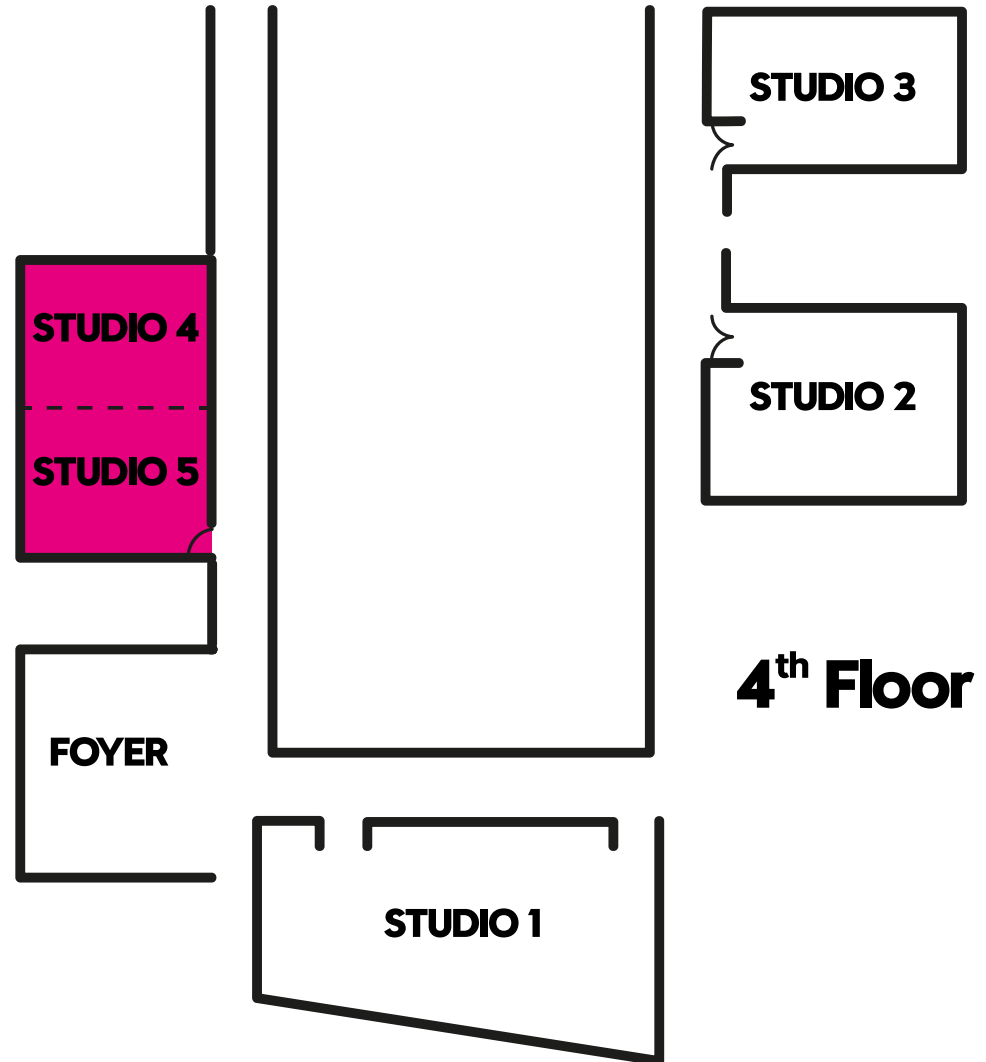


STUDIO 3



STUDIO 4 + 5

- 58 m² / 624 sq. ft.
- Located one floor above from Great Room
- Spacious room with flexible area that can be broken into two separate rooms
- Built-in speaker system and flat screen LCD TV
- Ceiling height 3,5 m / 11 ft.
- Accommodates approx. 65 in theatre, 30 in classroom and 40 in banquet



STUDIO 4 + 5



MARKET KITCHEN SIGNATURE RESTAURANT



MARKET KITCHEN

Taste. Sample. Savor. Market Kitchen, Signature Restaurant is a Modern American Farm-To-Table concept.

Inspired by the "greatest hits" of classic Jean-Georges Vongerichten cuisine, Market Kitchen emphasizes comfort and creativity. The menu reinvents familiar dishes with eclectic flair, allowing guests to try new flavor combinations and explore spices from other regions, all while remaining close to home.

Private dining room to accommodate 10 people. Restaurant total capacity 110 people in existing setup.



PRIVATE DINING ROOM





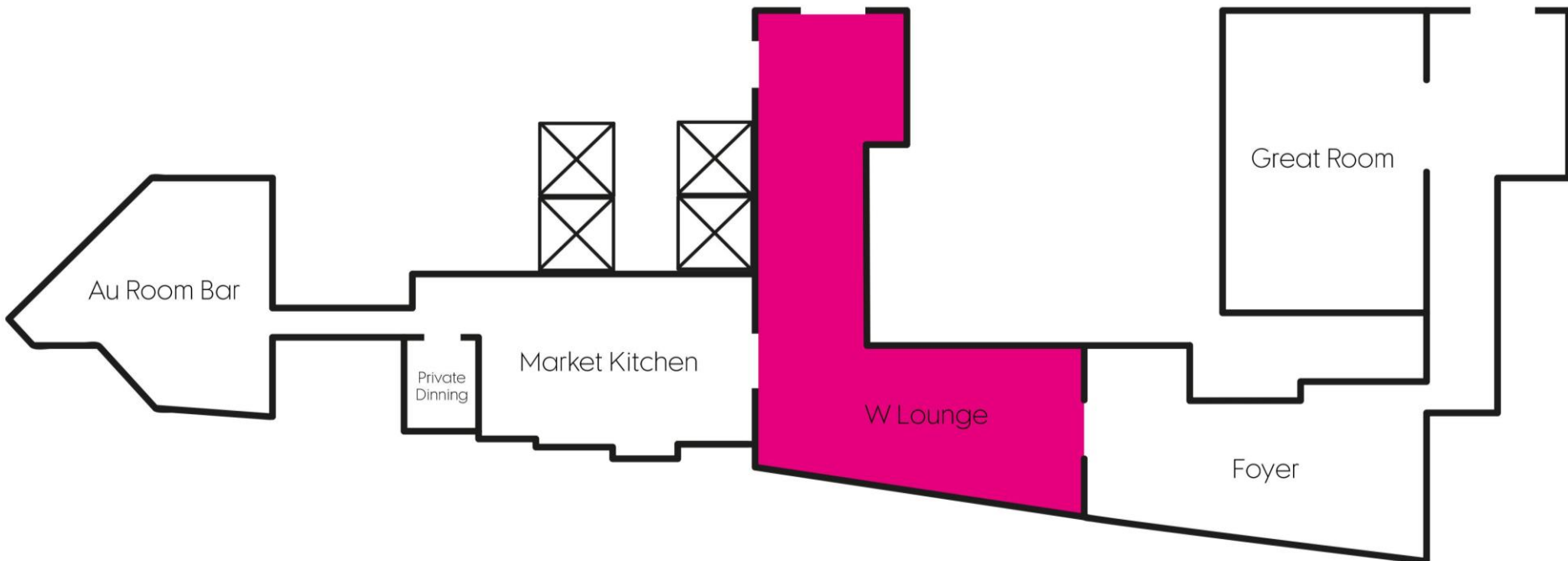


W LOUNGE ALL DAY LIVING SPACE



W LOUNGE

- Stylish ambience where you can mix and mingle, see and be seen and create your own intimate social space.
- Sip on a signature cocktail, groove to the latest W Music or get a cyber-rush with complimentary High Speed Internet Access.
- Our Lounge is your lounge, the perfect place to meet during the day and to play at night







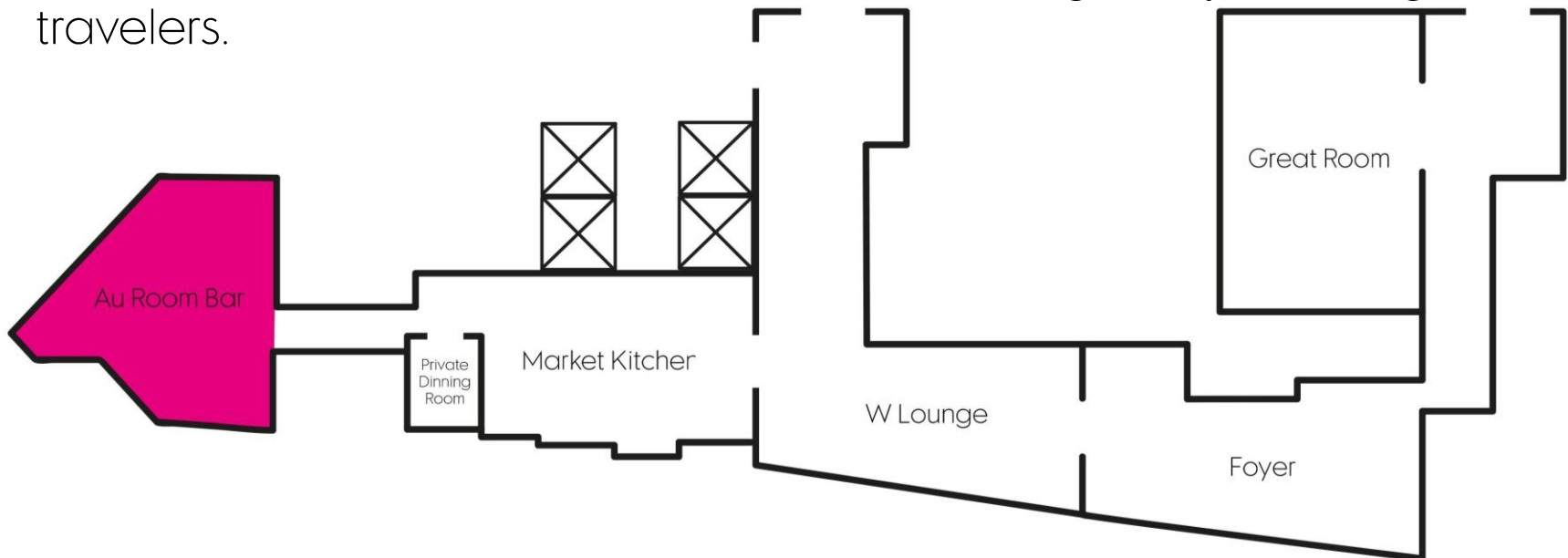


AU ROOM LATE NIGHT DESTINATION BAR



AU ROOM

- Step into the nightlife spotlight and mingle over signature cocktails and dynamic design at Au Room.
- Locally sourced ingredients stir the cocktail menu while also showcasing accents from classics with a modern twist.
- Nibble on a homegrown selection of small plates taking its influence from international locales.
- Energetic DJ's spinning original beats and dance-worthy tracks and the outdoor terrace draws a mix of clientele from Bogotá's jet set to global travelers.







**AWAY SPA
RECOUP
REFUEL
REVAMP**

AWAY SPA

- Chill out at Away Spa with over 170 m² of pure relaxation and fabulousness
- High tech skincare remixes with fabulous beauty rituals to recoup after the after-party
- Revamp after the rush of the city streets
- Guest personalized head-to-toe services
- Lounge for post treatment relaxation
- Enjoy one of our 4 treatment rooms, including a couple's room
- Amenities by Loto del Sur, featuring botanical products with the powerful and rich plants and extracts from the "south"
- Infuse zone with indoor relaxation pool and hydrotherapy zone, that promotes mixing and mingling







FIT POLISH BODY AND MINDSET



FIT

- Find your balance and boost your stamina at FIT; an energy filled space adjacent to Away Spa
- Our workout program is a bit more superficial, a bit more playful, and bit more about looking good
- Soak in the excess of sunlight over Bogota's skyline, while your workout in over 550 m² of exercise space
- Featuring state-of-the-art equipment from Technogym
- Private room for crossfit, yoga, pilates and more
- Partnership with Yoga Rebel, Tara Stiles
- Showers and locker rooms
- Personal trainers with a wealth of fitness experience that will help you reach your peak
- Complimentary to hotel guests
- Fit and Away Spa monthly memberships available





THANK YOU

